



SouthTown

AT BROWNS MILL VILLAGE



In town. On Budget

Imagine living intown in a planned community designed with your lifestyle in mind. SouthTown at Browns Mill Village is a new intown development located nearby downtown Atlanta. The single family homes at SouthTown are not only beautifully designed townhomes and expertly crafted, but they are also made to meet the price attainability demands and lifestyles of today's homeowners.

Starting in the low to mid-200s, SouthTown offers planned community homesites that are not often found within 5 miles of Downtown Atlanta. Stylish and attractive, these homes are created with a focus on smart technology and space efficiency, while providing homeowners the confidence of a solid warranty to let you sit back, relax and enjoy the Intown lifestyle.

SouthTown at Browns Mill will be a mixed-income community of 59 single-family townhomes, starting from the low \$200,000s. This community will feature home designs from Cityscape's Urban Townhome Collection that will be 1,800 square feet. These spacious and efficient two-story townhomes will offer three bedrooms and two-and-a-half baths with a garage.

SouthTown also features a community amenities package to include a landscape designed greenspace with recreational activities and a low-maintenance lifestyle with HOA-maintained lawn care and common ground landscaping.

Check out this fresh take on a traditional neighborhood with an intown lifestyle by living at SouthTown at Browns Mill Village....

Join the Intown Crowd!

Phone
404.480.3950

Email
Sales@cityscapehousing.com





Building To A Higher Standard

As a premium Atlanta intown developer, Cityscape has won the hearts and the admiration of new homebuyers from within many of Atlanta's intown neighborhoods. With mission driven funding behind them, Cityscape brings forward the SouthTown community as a notable example and to assist with solving the current issues of homeownership, neighborhood revitalization, intown affordability and the low housing supply that plagues the City of Atlanta. At SouthTown, Cityscape's commitment is to provide a better quality of life by delivering a superior home design to the buyers who call this neighborhood 'home.'

From the timeless period-styled architecture that line the streets with character ... to the charming front porches and open floorplan, every detail has been carefully considered. Inside, choice hardwood floors, hard-surface kitchen countertops, curated interior design packages and smart home technology become the added rewards for 'a life well lived' at SouthTown. Then there is the preferred location ... within minutes to the civic, social, cultural, and sporting amenities of downtown Atlanta, as well as business centers, government offices and International Airport, SouthTown will allow for its homeowners to really experience ...

The Best of the Good Life!

Georgian - A



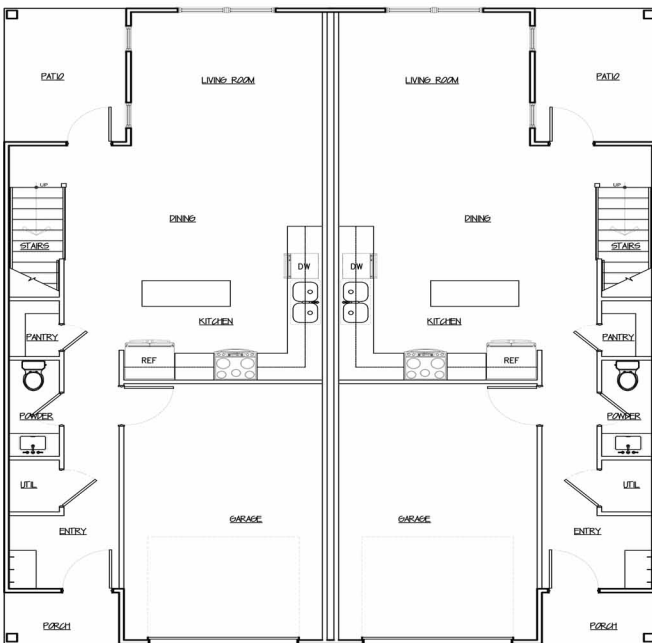
Virginia - A



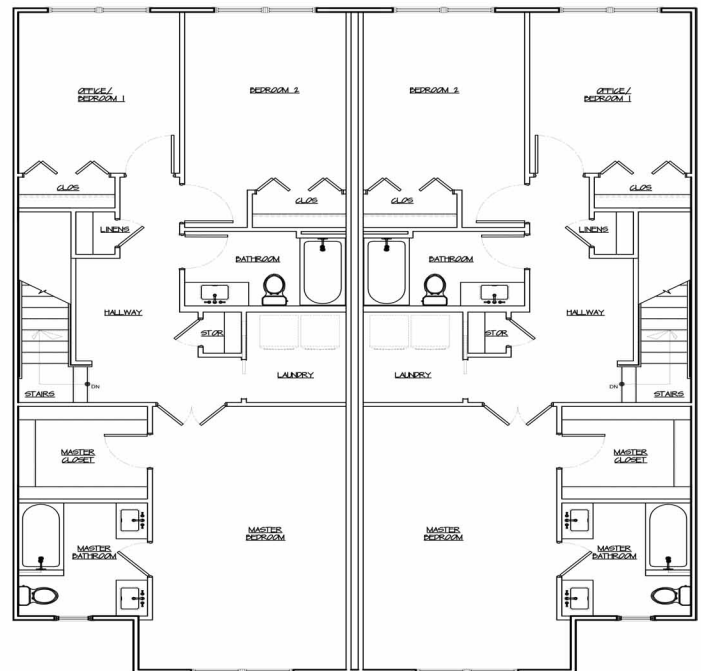
Carolina - A



Main Floor



Second Floor



Community information, including pricing, brands, standard features and availability are subject to change at any time prior to contracting without notice or obligation. Photographs, pictures, floor plans, elevations, features, colors and sizes are approximate for illustrative purposes only and will vary from the homes as built. All information is believed to be accurate, but is not warranted and is subject to withdrawal/modification without notice.

Georgian - B



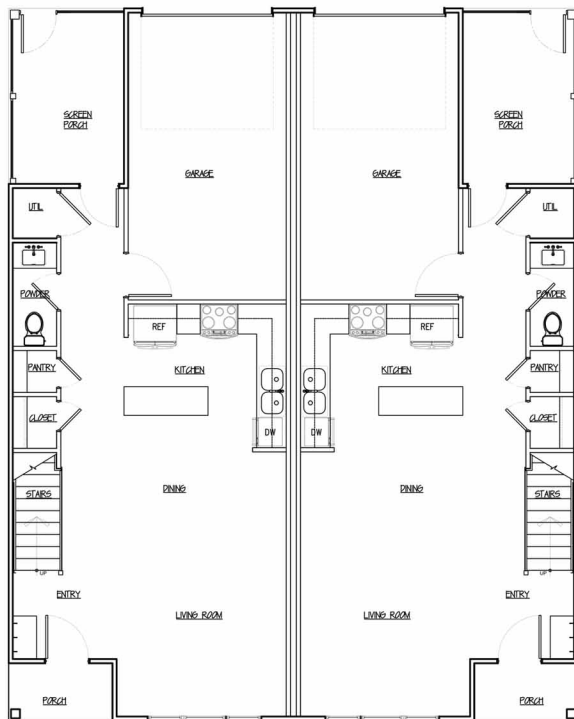
Virginia - B



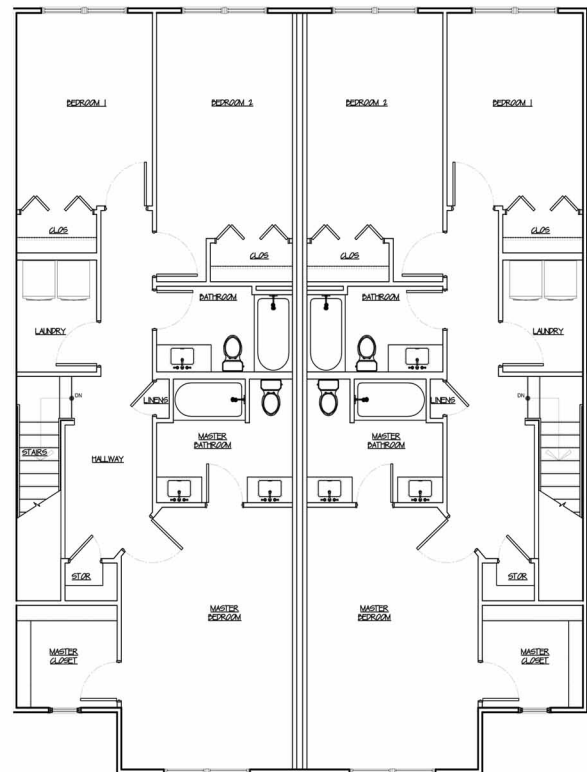
Carolina - B



Main Floor



Second Floor



Community information, including pricing, brands, standard features and availability are subject to change at any time prior to contracting without notice or obligation. Photographs, pictures, floor plans, elevations, features, colors and sizes are approximate for illustrative purposes only and will vary from the homes as built. All information is believed to be accurate, but is not warranted and is subject to withdrawal/modification without notice.

COMMUNITY LAYOUT



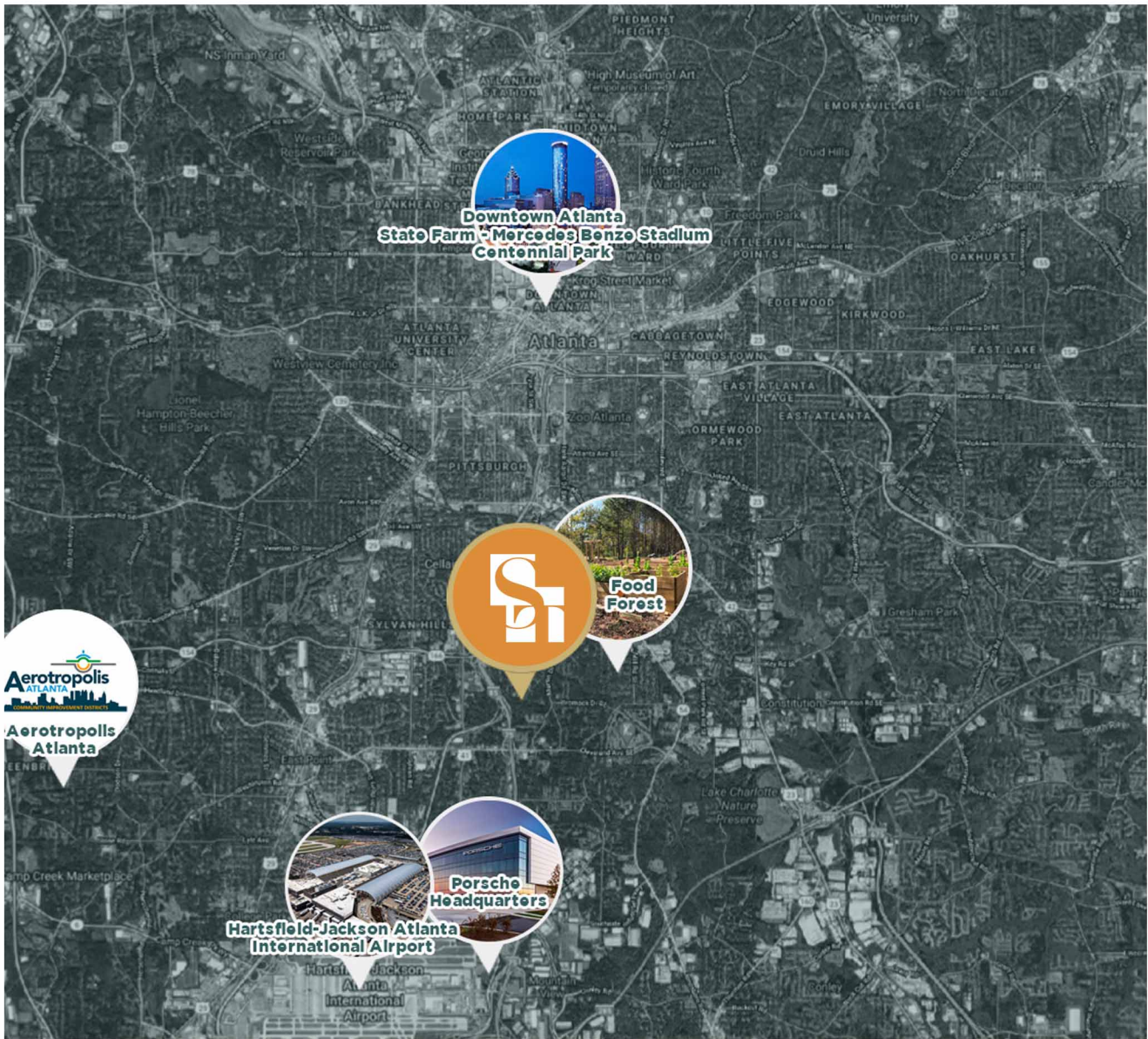
FROM I-75

From I-75 North : Take Exit 241. Make a left off exit. In less than a mile, make a right on Browns Mill Rd. Browns Mills Village will be on your left

From I-75 South : Take Exit 241. Make a right off exit. In less than a mile, make a right on Browns Mill Rd. Browns Mills Village will be on your left

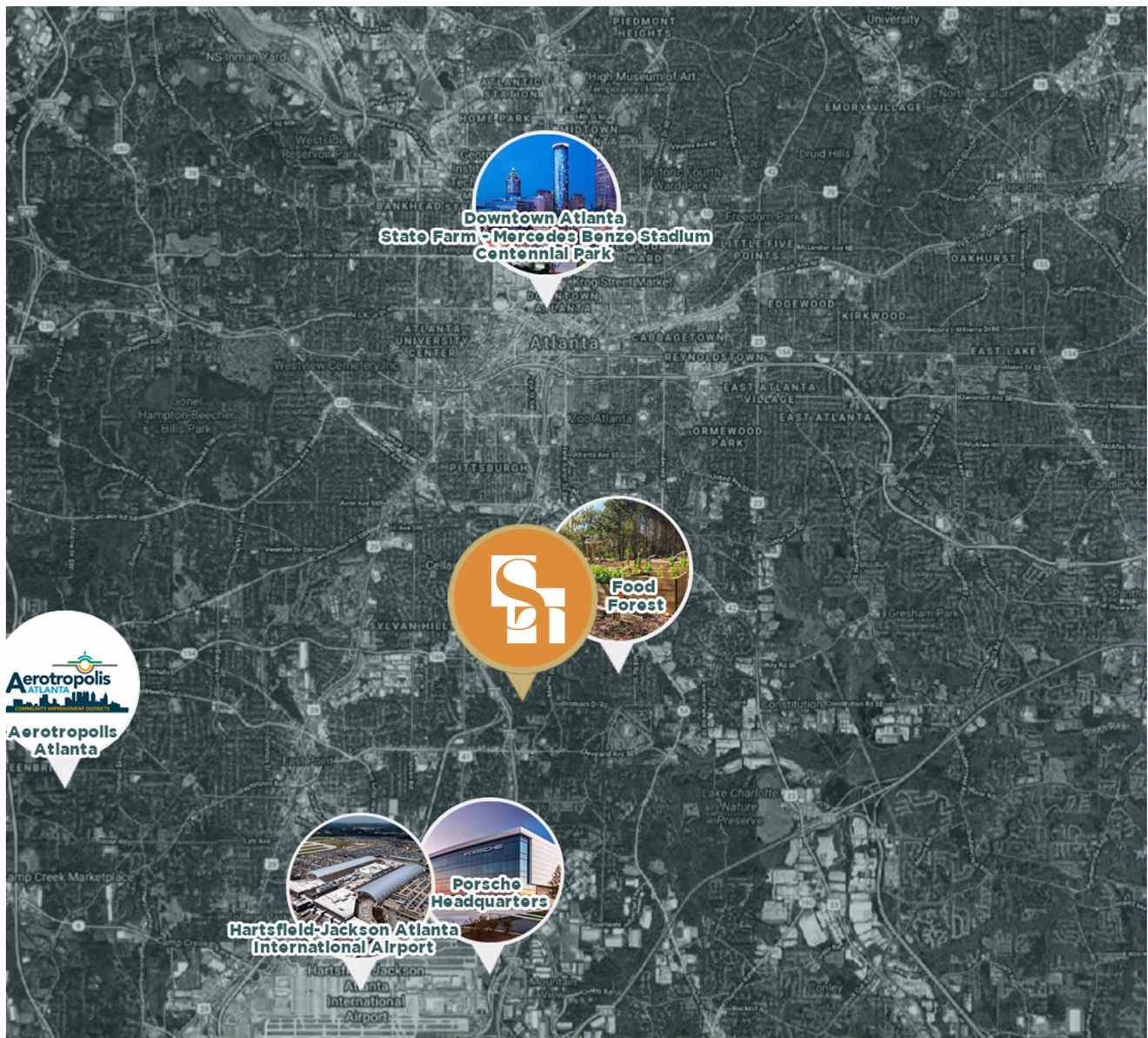
Community information, including pricing, brands, standard features and availability are subject to change at any time prior to contracting without notice or obligation. Photographs, pictures, floor plans, elevations, features, colors and sizes are approximate for illustrative purposes only and will vary from the homes as built. All information is believed to be accurate, but is not warranted and is subject to withdrawal/modification without notice.

VICINITY MAP



Community information, including pricing, brands, standard features and availability are subject to change at any time prior to contracting without notice or obligation. Photographs, pictures, floor plans, elevations, features, colors and sizes are approximate for illustrative purposes only and will vary from the homes as built. All information is believed to be accurate, but is not warranted and is subject to withdrawal/modification without notice.

VICINITY MAP



Community information, including pricing, brands, standard features and availability are subject to change at any time prior to contracting without notice or obligation. Photographs, pictures, floor plans, elevations, features, colors and sizes are approximate for illustrative purposes only and will vary from the homes as built. All information is believed to be accurate, but is not warranted and is subject to withdrawal/modification without notice.